

Leading Teachers From Substitution To Redefinition: A Hands-On Intro to the SAMR Model

Cynthia Curry, Steve Garton, Jeff Mao, and Ruben Puentedura

The SAMR Model

Transformation

Redefinition

Tech allows for the creation of new tasks, previously inconceivable

Modification

Tech allows for significant task redesign

Enhancement

Augmentation

Tech acts as a direct tool substitute, with functional improvement

Substitution

Tech acts as a direct tool substitute, with no functional change

Redefinition

Tech allows for the creation of new tasks, previously inconceivable

Modification

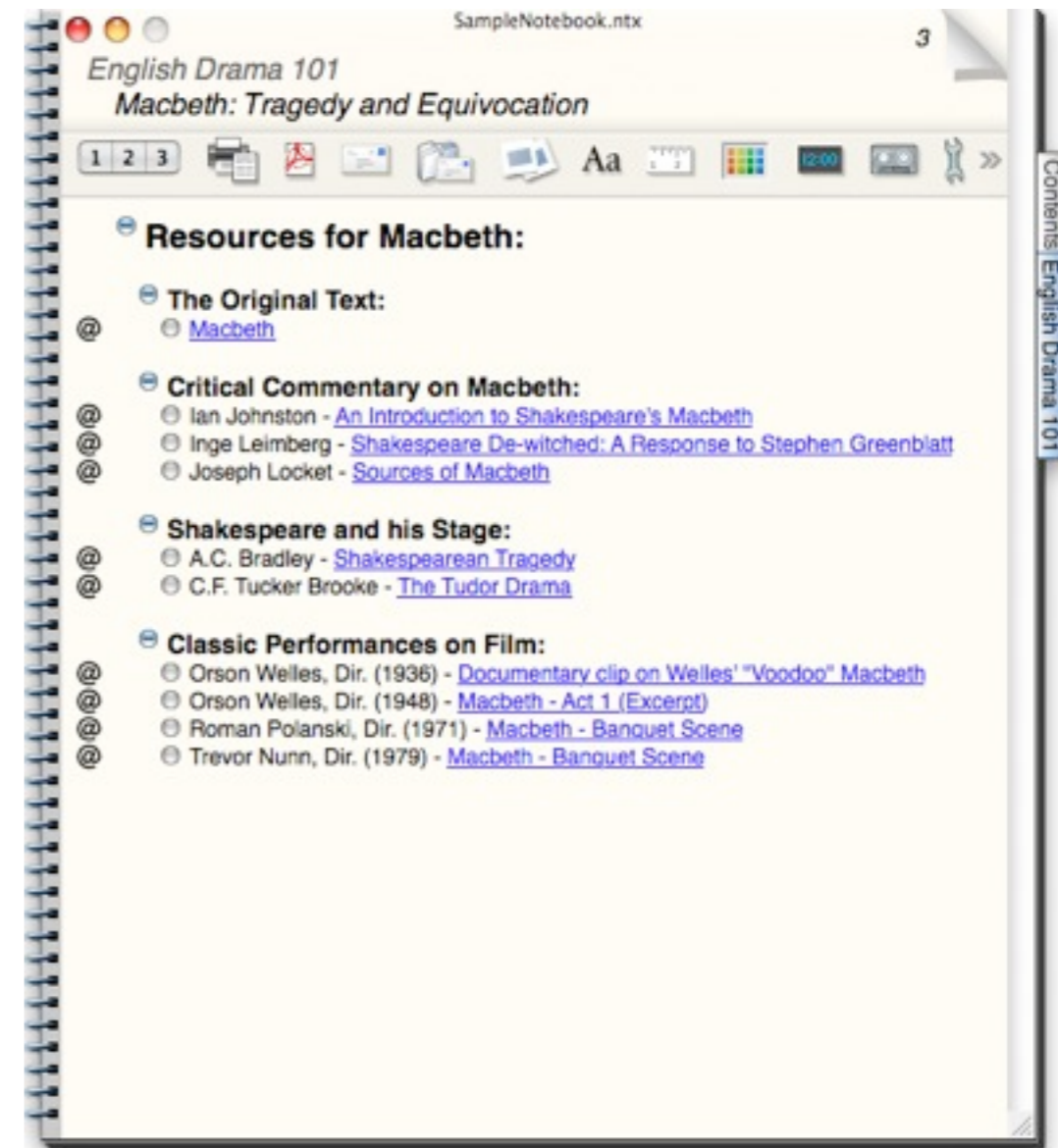
Tech allows for significant task redesign

Augmentation

Tech acts as a direct tool substitute, with functional improvement

Substitution

Tech acts as a direct tool substitute, with no functional change



SampleNotebook.ntx 3

English Drama 101
Macbeth: Tragedy and Equivocation

1 2 3

Resources for Macbeth:

- The Original Text:**
 - [Macbeth](#)
- Critical Commentary on Macbeth:**
 - Ian Johnston - [An Introduction to Shakespeare's Macbeth](#)
 - Inge Leimberg - [Shakespeare De-witched: A Response to Stephen Greenblatt](#)
 - Joseph Locket - [Sources of Macbeth](#)
- Shakespeare and his Stage:**
 - A.C. Bradley - [Shakespearean Tragedy](#)
 - C.F. Tucker Brooke - [The Tudor Drama](#)
- Classic Performances on Film:**
 - Orson Welles, Dir. (1936) - [Documentary clip on Welles' "Voodoo" Macbeth](#)
 - Orson Welles, Dir. (1948) - [Macbeth - Act 1 \(Excerpt\)](#)
 - Roman Polanski, Dir. (1971) - [Macbeth - Banquet Scene](#)
 - Trevor Nunn, Dir. (1979) - [Macbeth - Banquet Scene](#)

Contents: English Drama 101



Macbeth: List of Scenes

http://shakespeare.mit.edu/macbeth/index.html

The Tragedy of Macbeth
Shakespeare homepage | Macbeth

Entire play in one page

Act 1, Scene 1: [A desert place.](#)
Act 1, Scene 2: [A camp near Forres.](#)
Act 1, Scene 3: [A heath near Forres.](#)
Act 1, Scene 4: [Forres. The palace.](#)
Act 1, Scene 5: [Inverness. Macbeth's castle.](#)
Act 1, Scene 6: [Before Macbeth's castle.](#)
Act 1, Scene 7: [Macbeth's castle.](#)

Act 2, Scene 1: [Court of Macbeth's castle.](#)
Act 2, Scene 2: [The same.](#)
Act 2, Scene 3: [The same.](#)
Act 2, Scene 4: [Outside Macbeth's castle.](#)

Act 3, Scene 1: [Forres. The palace.](#)
Act 3, Scene 2: [The palace.](#)
Act 3, Scene 3: [A park near the palace.](#)
Act 3, Scene 4: [The same. Hall in the palace.](#)
Act 3, Scene 5: [A Heath.](#)
Act 3, Scene 6: [Forres. The palace.](#)

Act 4, Scene 1: [A cavern. In the middle, a boiling cauldron.](#)
Act 4, Scene 2: [Fife. Macduff's castle.](#)
Act 4, Scene 3: [England. Before the King's palace.](#)

Act 5, Scene 1: [Dunsinane. Arto room in the castle.](#)
Act 5, Scene 2: [The country near Dunsinane.](#)
Act 5, Scene 3: [Dunsinane. A room in the castle.](#)
Act 5, Scene 4: [Country near Birnam wood.](#)

Redefinition

Tech allows for the creation of new tasks, previously inconceivable

Modification

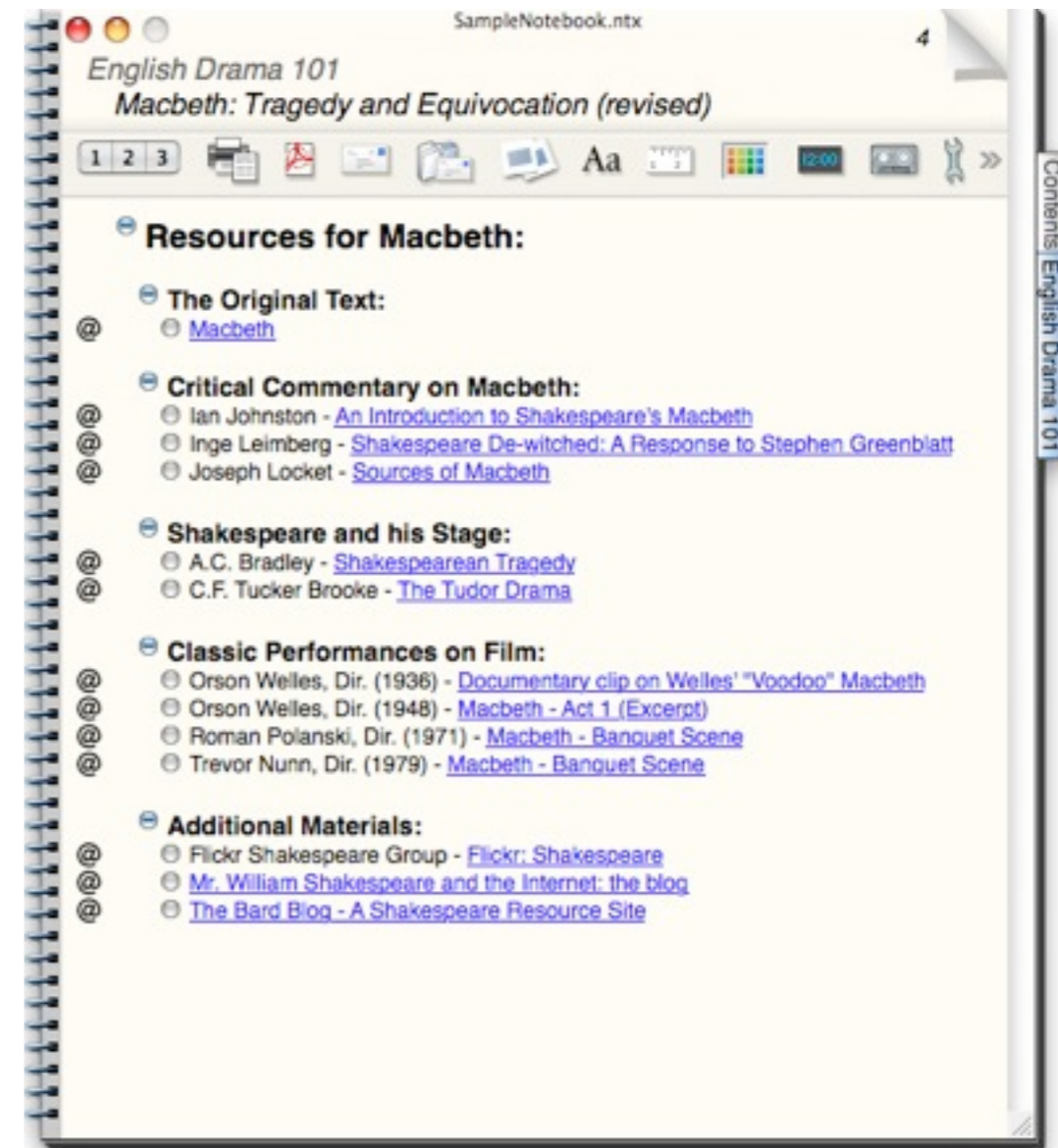
Tech allows for significant task redesign

Augmentation

Tech acts as a direct tool substitute, with functional improvement

Substitution

Tech acts as a direct tool substitute, with no functional change



SampleNotebook.ntx 4

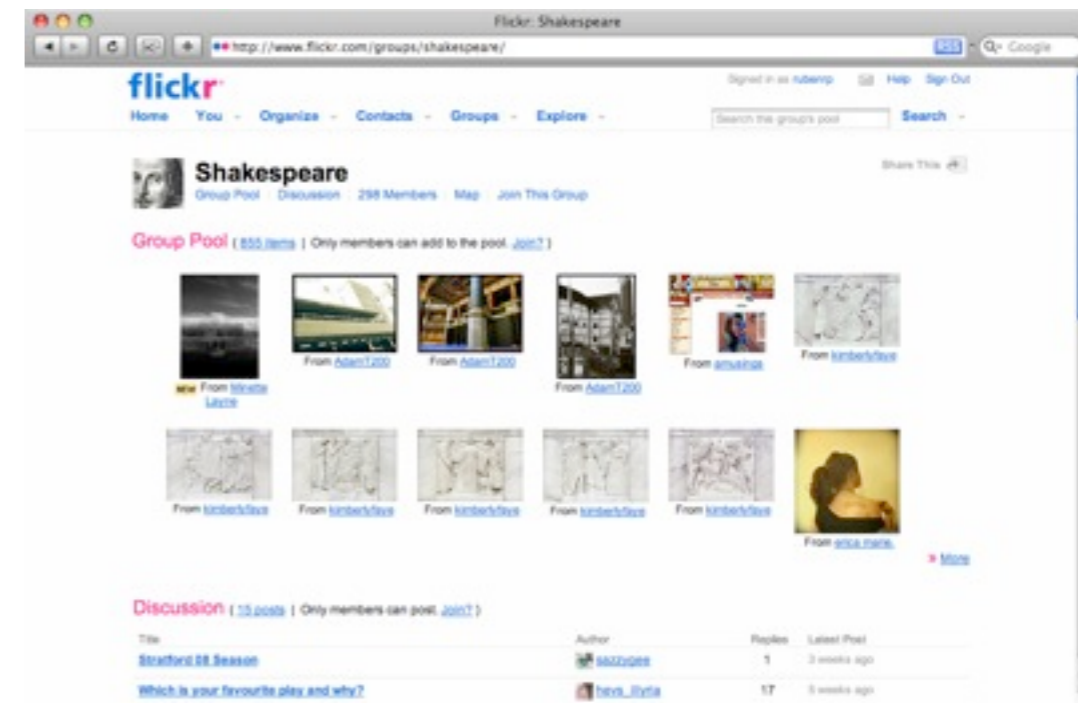
English Drama 101
Macbeth: Tragedy and Equivocation (revised)

1 2 3

Resources for Macbeth:

- The Original Text:**
 - Macbeth
- Critical Commentary on Macbeth:**
 - Ian Johnston - [An Introduction to Shakespeare's Macbeth](#)
 - Inge Leimberg - [Shakespeare De-witched: A Response to Stephen Greenblatt](#)
 - Joseph Locket - [Sources of Macbeth](#)
- Shakespeare and his Stage:**
 - A.C. Bradley - [Shakespearean Tragedy](#)
 - C.F. Tucker Brooke - [The Tudor Drama](#)
- Classic Performances on Film:**
 - Orson Welles, Dir. (1936) - [Documentary clip on Welles' "Voodoo" Macbeth](#)
 - Orson Welles, Dir. (1948) - [Macbeth - Act 1 \(Excerpt\)](#)
 - Roman Polanski, Dir. (1971) - [Macbeth - Banquet Scene](#)
 - Trevor Nunn, Dir. (1979) - [Macbeth - Banquet Scene](#)
- Additional Materials:**
 - Flickr Shakespeare Group - [Flickr: Shakespeare](#)
 - [Mr. William Shakespeare and the Internet: the blog](#)
 - [The Bard Blog - A Shakespeare Resource Site](#)

Contents: English Drama 101



Flickr: Shakespeare

http://www.flickr.com/groups/shakespeare/

Signed in as ruberp Help Sign Out

Home You Organize Contacts Groups Explore Search the group's pool Search

Shakespeare Group Pool Discussion 298 Members Map Join This Group

Group Pool (855 items | Only members can add to the pool. [Join?](#))

From [Lizette](#) From [AdamT200](#) From [AdamT200](#) From [AdamT200](#) From [groucho](#) From [kimberlylee](#)

From [kimberlylee](#) From [kimberlylee](#) From [kimberlylee](#) From [kimberlylee](#) From [kimberlylee](#) From [kimberlylee](#) From [groucho](#)

Discussion (13 posts | Only members can post. [Join?](#))

Title	Author	Replies	Latest Post
Stratford 08 Season	mazzipes	1	3 weeks ago
Which is your favourite play and why?	heavily	17	3 weeks ago

Redefinition

Tech allows for the creation of new tasks, previously inconceivable

Modification

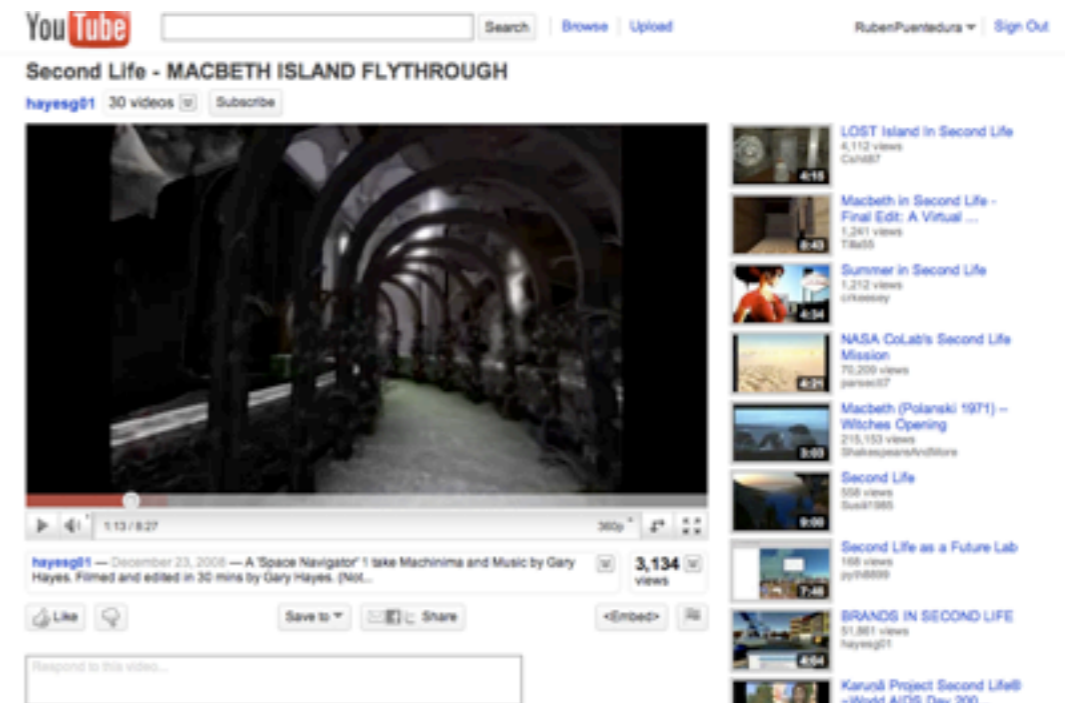
Tech allows for significant task redesign

Augmentation

Tech acts as a direct tool substitute, with functional improvement

Substitution

Tech acts as a direct tool substitute, with no functional change



Redefinition

Tech allows for the creation of new tasks, previously inconceivable

Modification

Tech allows for significant task redesign

Augmentation

Tech acts as a direct tool substitute, with functional improvement

Substitution

Tech acts as a direct tool substitute, with no functional change



Redefinition

Tech allows for the creation of new tasks, previously inconceivable

Modification

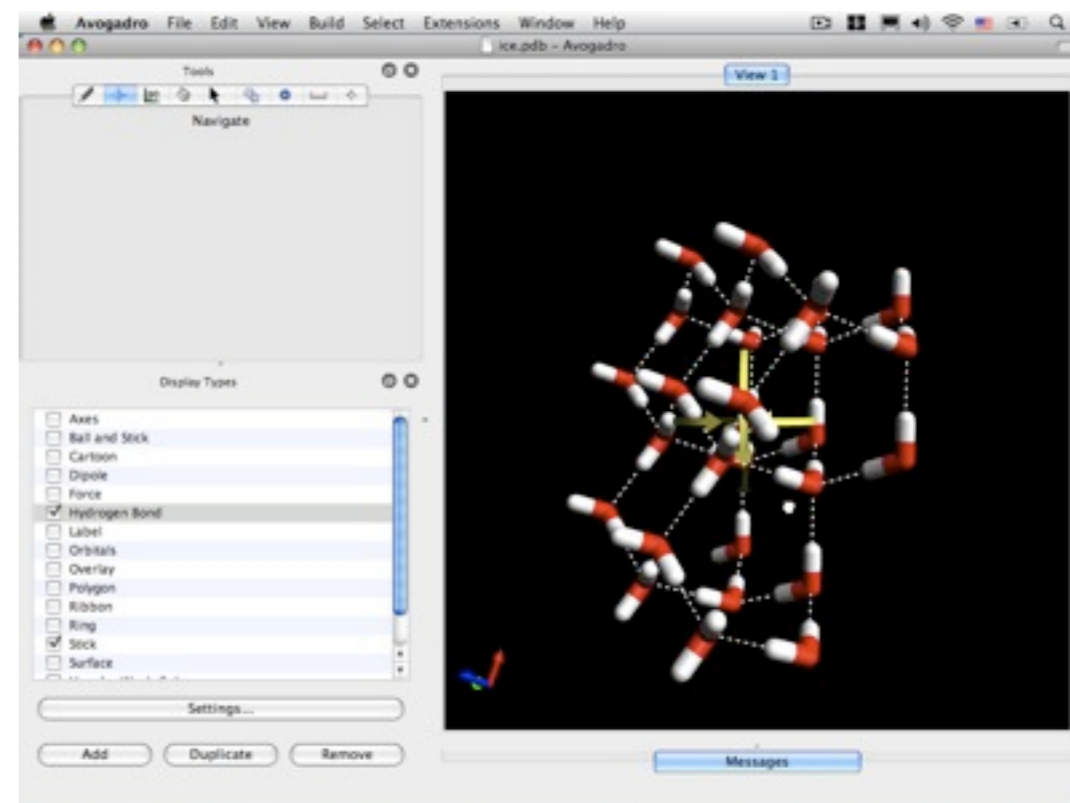
Tech allows for significant task redesign

Augmentation

Tech acts as a direct tool substitute, with functional improvement

Substitution

Tech acts as a direct tool substitute, with no functional change



Redefinition

Tech allows for the creation of new tasks, previously inconceivable

Modification

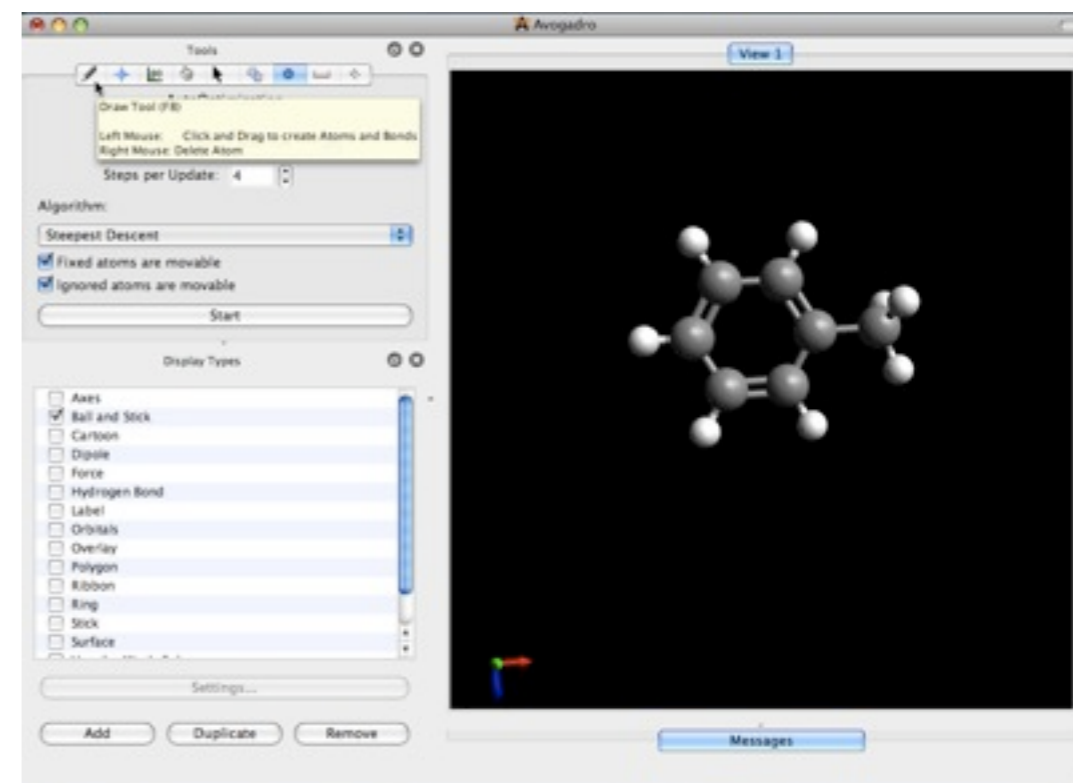
Tech allows for significant task redesign

Augmentation

Tech acts as a direct tool substitute, with functional improvement

Substitution

Tech acts as a direct tool substitute, with no functional change



Redefinition

Tech allows for the creation of new tasks, previously inconceivable

Modification

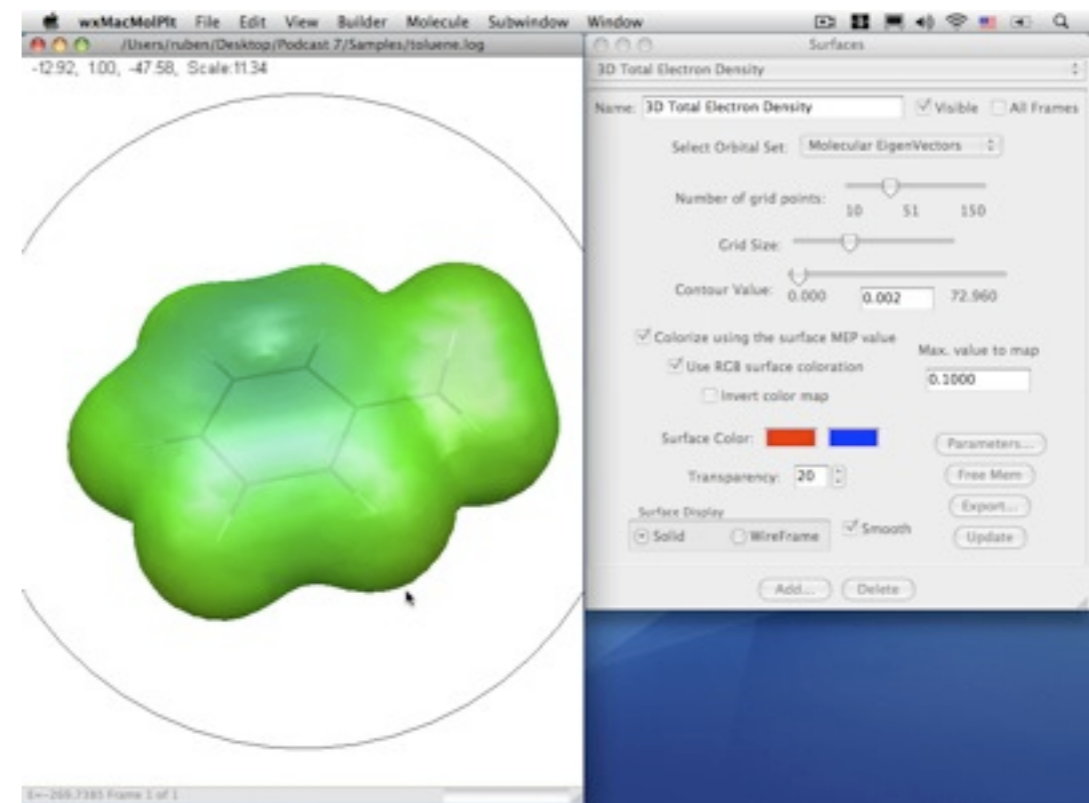
Tech allows for significant task redesign

Augmentation

Tech acts as a direct tool substitute, with functional improvement

Substitution

Tech acts as a direct tool substitute, with no functional change



Applying the Model

The Tools



MapLib

<http://maplib.net>

or



TitanPad

<http://titanpad.com>



Kwik Surveys

<http://www.kwiksurveys.com>

or



Click2Map

<http://www.click2map.com>



LimeSurvey

<http://www.limesurvey.org>

Substitution

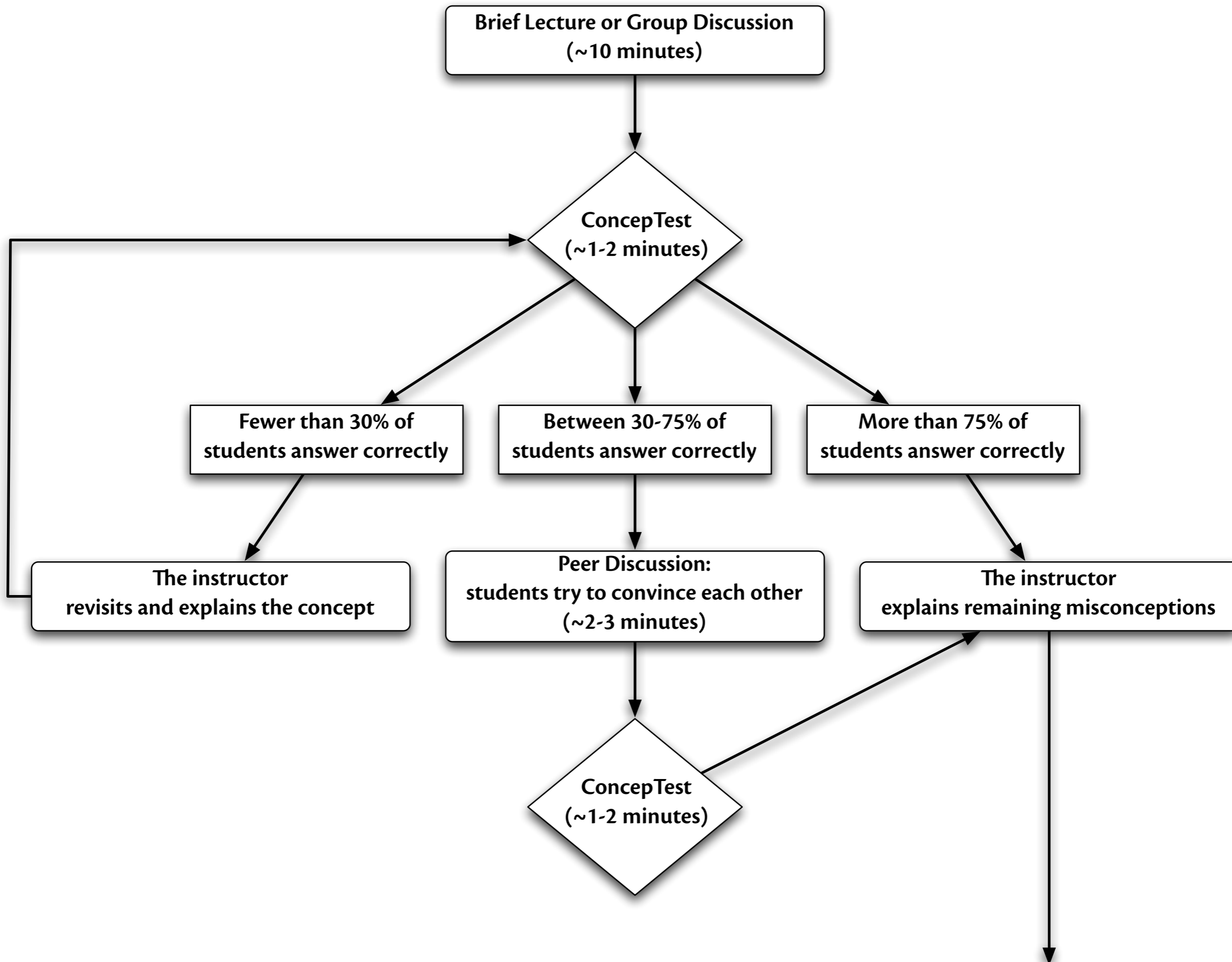
- MapLib: create basic maps with pushpins, lines, etc. that replicate paper maps;
- TitanPad: have students share, show each other their writing.

Augmentation

- MapLib: link the maps to online resources;
- TitanPad: have students work on collaborative writing.

Modification

- MapLib and TitanPad: integrate the two, so that MapLib maps link to TitanPad documents and vice versa.
- Kwik Surveys: create a simple ConcepTest, in order to test some of the concepts being conveyed via the MapLib/TitanPad combo.



Which of these scenarios does not describe an acceleration?

A. A car going round a circular racetrack at constant speed.

B. A car traveling on a straight racetrack at constant speed.

C. A stone falling from the top of a building.

D. A simple pendulum.

Which of these would best be described as the “Crossing of the First Threshold” in *The Matrix*?

A. Neo goes to the club.

B. Neo takes the red pill.

C. Neo meets the Oracle.

D. Neo returns to the Matrix to save Morpheus.

Redefinition

- Suppose you were to integrate a Wiki next:
 - Why would you do it? i.e., what capabilities should it add?
 - Would this bring the project to the Redefinition level? If so, how, and why?
- What other alternatives might you explore to bring the project to the Redefinition level?

Maine121.org



This work is licensed under a Creative Commons Attribution-Noncommercial-Share Alike 3.0 License.

